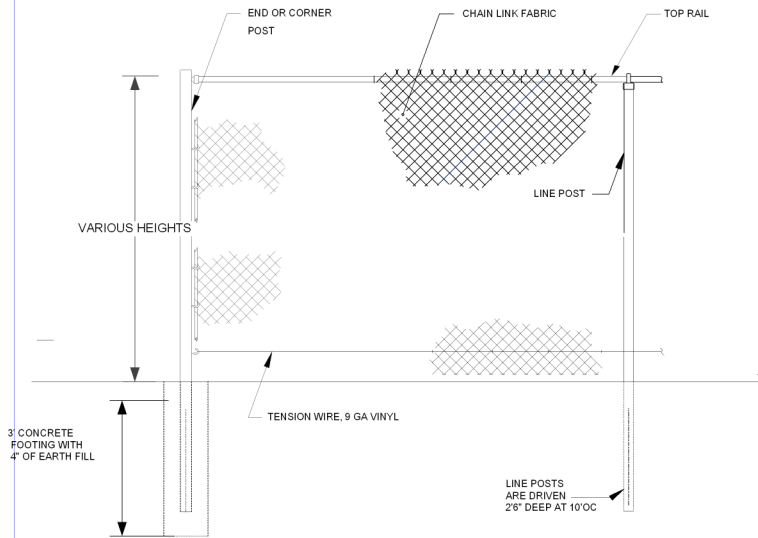


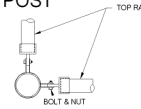
# Residential Chain Link Specification – Painted

## TYPICAL SECTION

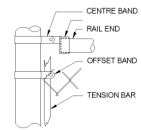


## FITTING DETAILS

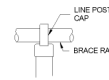
### TOP VIEW CORNER POST



### SIDE VIEW CORNER POST



### SIDE VIEW LINE POST



## SPECIFICATIONS:

POSTS, RAILS : COLD FORMED STEEL TUBING  
 INTERIOR & EXTERIOR GALVALUME(TM) COATING  
 CHROMATE CONVERSION COATING  
 ELECTROSTATICALLY APPLIED  
 THERMALLY BONDED POLYESTER POWDER COATING  
 MINIMUM FILM THICKNESS 2.5 mils

AVAILABLE PANEL HEIGHTS: 914mm (36")  
 1219mm (48")  
 1524mm (60")  
 1829mm (72")

POSTS: 1-7/8" CORNER AND END POST, 18 GAUGE  
 1-1/2" LINE POSTS, 18 GAUGE

GATES: VARIOUS WIDTHS

POST CAP: ACORN

STANDARD COLOUR: HIGH GLOSS BLACK

TOP RAIL: 1-1/4" ROUND 18 GAUGE

WARRANTY: 2 YEAR INSTALLATION PROTECTION.

PICKETS: SPEAR PICKET TOP

FITTINGS: POLYESTER POWDER COATED  
 FACTORY FINISH AS ABOVE

FABRIC: 1-1/2" DIAMOND WITH 11GA VINYL FINISH  
 Option : 1-1/2" DIAMOND WITH 9GA VINYL FINISH  
 Option : 2" DIAMOND WITH 9GA VINYL FINISH



**KING FENCE**

1234 Advance Road  
 Burlington, Ontario L7M 1G6 Tel: 905-335-3217 Fax: 905-331-1868